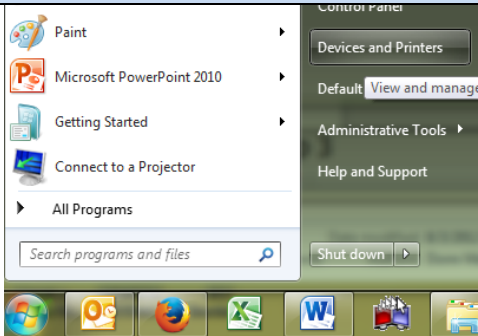


Printer Server: Adding a Printer

Step 1

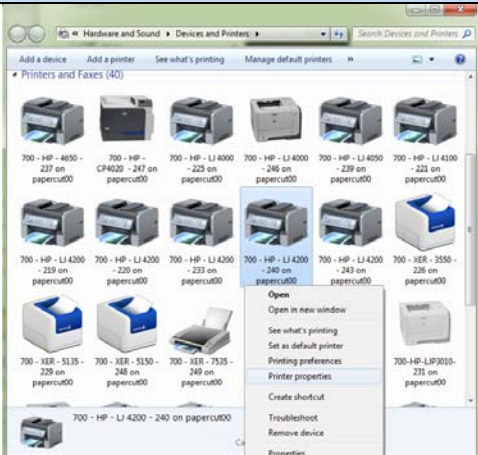


NOTE: Locate the "Printer Name" from the label on the front of the printer. Example: xxx-HP-4250-xxx

Click on **Start**.

Click on **Devices and Printers**.

Step 2



Locate the appropriate printer option according to the "Printer Name" .

Right-click on the appropriate printer option.

Click on **Set as default printer**.

Close the Devices and Printers window.

Step 3

Congratulations!
You are now ready to print

Finished